



**\$ 2,199,999**  
List Price



**FOR SALE**

**± 67 ACRES OF INDUSTRIAL ZONED LAND**

RURAL WHEATLAND COUNTY, ALBERTA

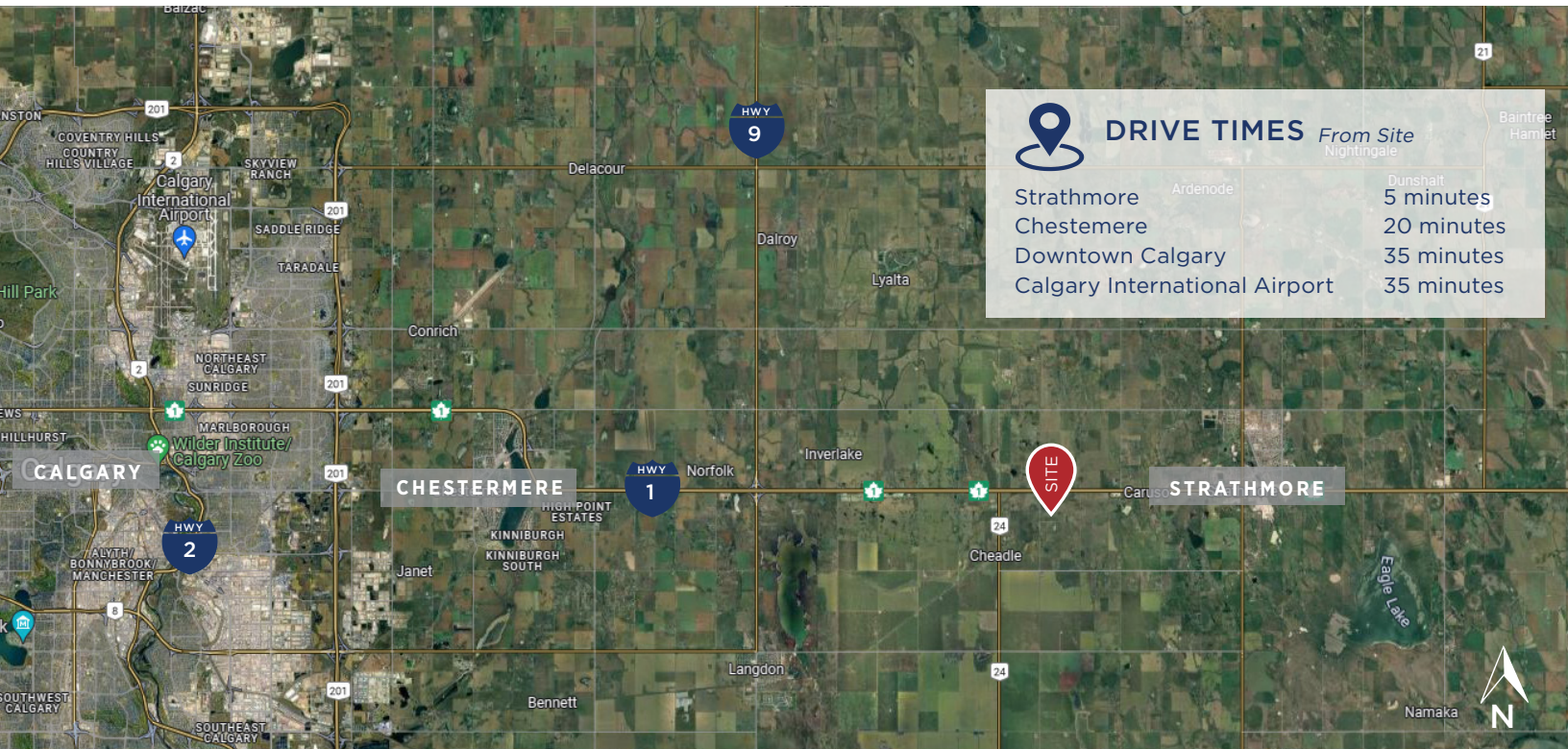
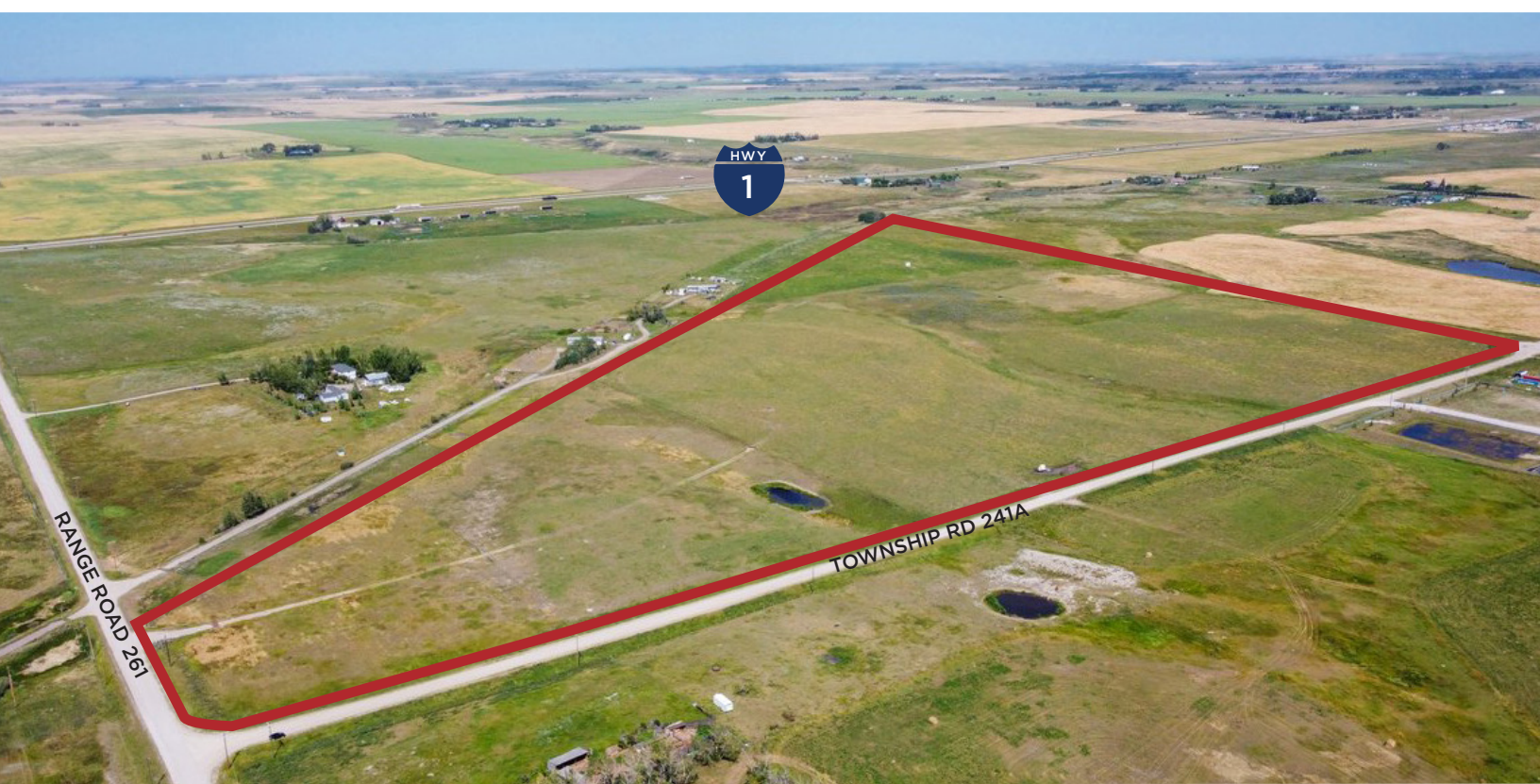
- Welcome to a thriving industrial hub strategically situated just 1.7 kilometers south of Highway 1. This prime location offers unparalleled accessibility, being a mere 5 minutes away from the renowned De Havilland Manufacturing Facility and conveniently positioned 25 minutes east of Calgary and 5 minutes west of Strathmore, Alberta.
- Spanning approximately ± 67 acres, this fully fenced industrial property offers a substantial expanse of land, providing an ideal canvas for diverse industrial endeavors.
- Benefit from site services extended to the property line, streamlining the development process and enhancing the functionality of your industrial operations.
- A Phase 1 Ground Water Report is available, offering comprehensive insights into the environmental conditions of the property and ensuring a well-informed decision-making process.

**Ria Mavrikos,**  
Commercial Sales & Leasing  
403.875.0886 [mavrikoscre@gmail.com](mailto:mavrikoscre@gmail.com)



[www.remaxkey.ca](http://www.remaxkey.ca)

# FOR SALE | ± 67 ACRES OF INDUSTRIAL ZONED LAND



**Ria Mavrikos,**  
 Commercial Sales & Leasing  
 403.875.0886 mavrikodcre@gmail.com



The information contained herein was obtained from sources deemed to be reliable and is believed to be true; it has not been verified and as such, cannot be warranted nor form a part of any future contract. All measurements need to be independently verified by the Purchaser.